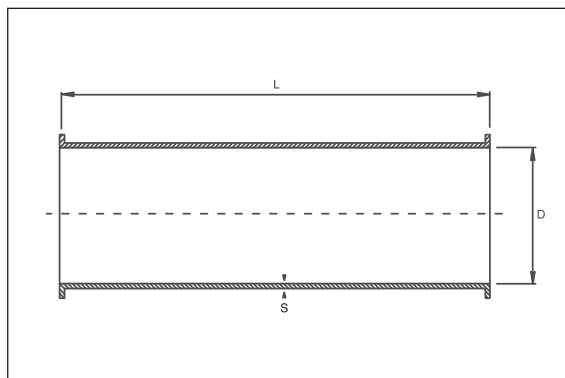




Straight Ducting

Code D



Dimensional specifications are given in the table below

Dimensional Specifications

PRODUCT CODE	D mm	S mm	A	B	C
			L=0.5m	L=1.0m	L=2.0m
Weight - kg					
D80	80	0.75	0.80	1.60	3.20
D100	100	0.75	1.00	2.00	4.00
D125	125	0.75	1.25	2.50	5.00
D140	140	0.75	1.40	2.80	5.60
D150	150	0.75	1.50	3.00	6.00
D160	160	0.75	1.60	3.20	6.40
D180	180	0.75	1.75	3.50	7.00
D200	200	0.75	2.00	4.00	8.00
D225	225	0.75	2.25	4.50	9.00
D250	250	0.75	2.50	5.00	10.00
D275	275	0.75	2.75	5.50	11.00
D300	300	0.75	2.85	5.70	11.40
D315	315	0.75	3.00	6.00	12.00
D325	325	0.75	3.00	6.00	12.00
D350	350	0.75	3.25	6.50	13.00
D375	375	0.75	3.30	6.50	13.00
D400	400	0.90	4.50	9.00	18.00
D425	425	0.90	4.60	9.20	18.50
D450	450	0.90	5.15	10.30	20.60
D475	475	0.90	5.20	10.30	20.60
D500	500	0.90	5.70	11.40	22.80
D550	550	0.90	6.25	12.50	25.00
D600	600	0.90	6.80	13.60	27.20
D630	630	0.90	7.20	14.40	28.80
D650	650	0.90	7.50	15.00	30.00
D700	700	0.90	8.00	16.00	32.00
D750	750	0.90	8.50	17.00	34.00
D800	800	1.00	10.00	20.00	40.00
D850	850	1.00	10.75	21.50	43.00
D900	900	1.00	11.50	23.00	46.00
D950	950	1.00	12.25	24.50	49.00
D1000	1000	1.00	13.00	26.00	52.00

Material

longitudinally lock formed galvanised ducts

Sizes

Diameter: 80mm – 1000mm
0.5 m, 1.0m and 2.0m lengths Other dimensions available to order



Sydney Sales +61 2 9677 2366 (1300 138 038)

www.eximo.com.au

[email: sales@eximo.com.au](mailto:sales@eximo.com.au)

